

# **\$228,500 - # 431- 1520 Hammond Gate Nw, Edmonton**

MLS® #E4254026

## **\$228,500**

2 Bedroom, 2.00 Bathroom, 920 sqft  
Condo / Townhouse on 0.00 Acres

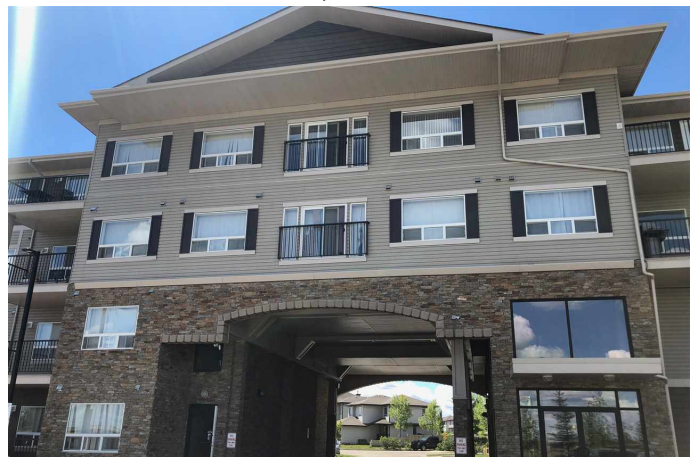
Hamptons The, Edmonton, AB

Remarkable brand new 2 bedroom condo!! Southeast park like courtyard exposure from balcony and bdrms on the fourth floor located in the wonderful west end complex of Park Place Hamptons. Upgrades include light fixtures, faucets, counter tops, cabinets, 36 inch island, carpet, Bright & open with 12 Ft. VAULTED CEILINGS, newer stainless steel appliance, in-suite laundry & in-floor radiant heating, energy efficient windows. Easy access to Anthony Henday, Whitemud & Highway 60, shopping, public transportation & golf course. Move in and enjoy!!

Built in 2008

## **Essential Information**

MLS® #	E4254026
Price	\$228,500
Bedrooms	2
Bathrooms	2.00
Full Baths	2
Square Footage	920
Acres	0.00
Year Built	2008
Type	Condo / Townhouse
Sub-Type	Lowrise Apartment
Style	Single Level Apartment
Status	ACTIVE



## Community Information

Address	# 431- 1520 Hammond Gate Nw
Area	Edmonton
Subdivision	Hamptons The
City	Edmonton
County	ALBERTA
Province	AB
Postal Code	T6M 0J4

## Amenities

Features	Laundry-In-Suite
Parking Spaces	1
Parking	Underground

## Interior

Interior	Carpet, Linoleum
Interior Features	Dishwasher-Built-In, Dryer, Refrigerator, Stove-Electric, Washer
Heating	In Floor Heat System
# of Stories	1
Basement	No Basement, None

## Exterior

Exterior	Stone, Vinyl
Exterior Features	Shopping Nearby
Roof	Asphalt Shingles
Construction	Wood Frame
Foundation	Concrete

## Additional Information

Date Listed	July 12th, 2021
Condo Fee	\$353

Data is deemed reliable but is not guaranteed accurate by the REALTORS® Association of Edmonton. Copyright 2021 by the REALTORS® Association of Edmonton. All rights reserved.

Listing information last updated on October 17th, 2021 at 10:16am CDT